

SIGN-POSTED [SIGN-POSED]

...in the Sandscape

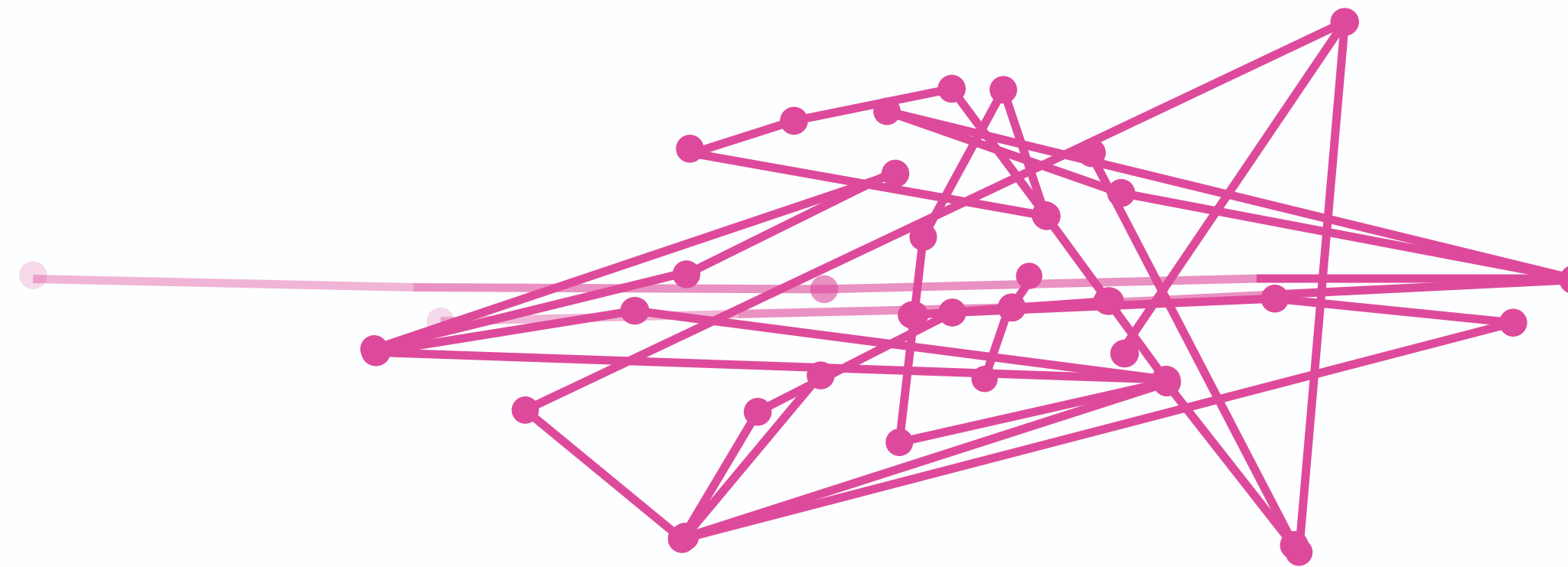
A investigation of our collaboration in spatial-relational terms

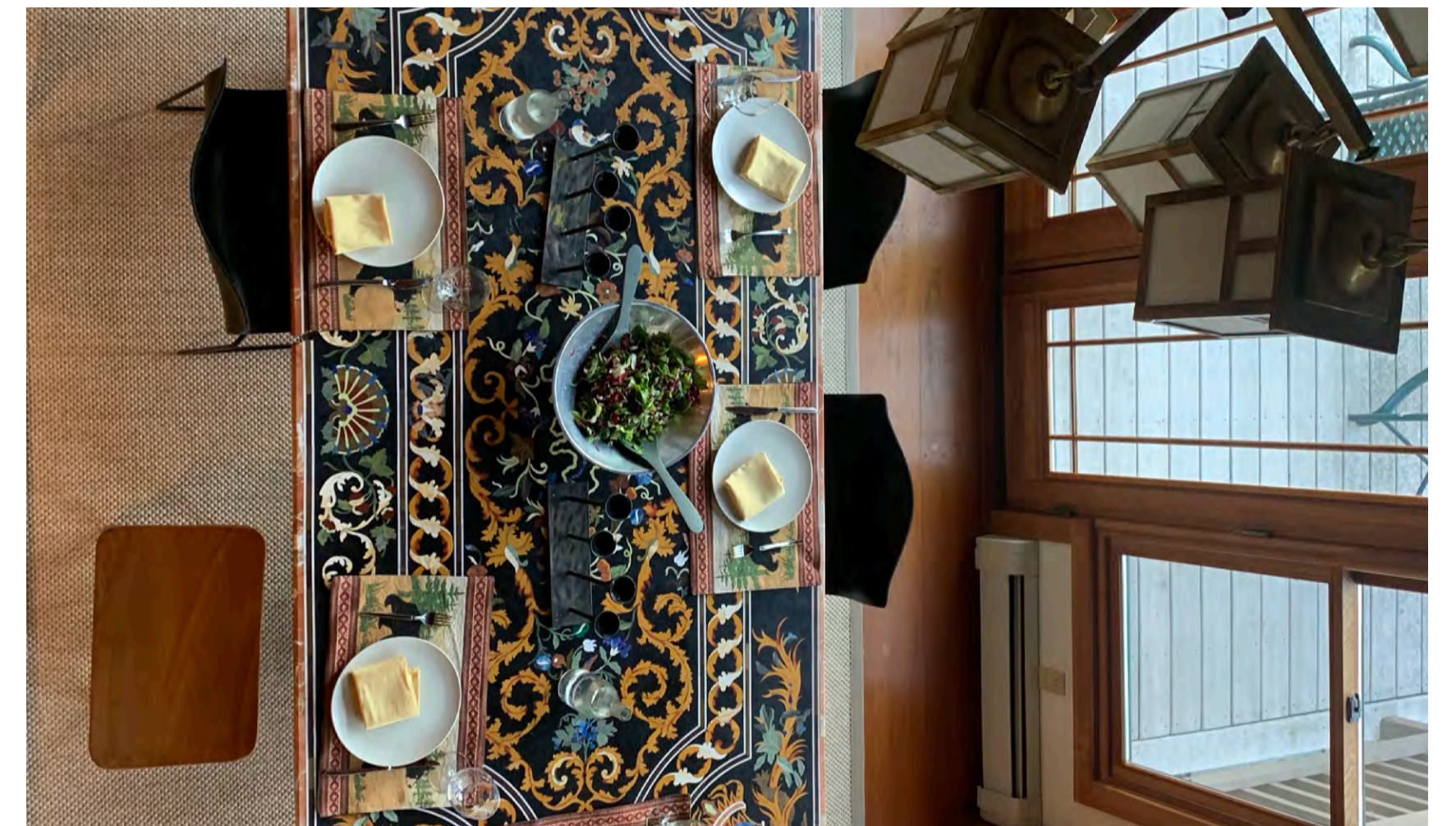
In collaboration we became signposts for each other.

We signaled direction - artistic, geographic, social. Each one of us looked to the others for signs of discovery, connection, and next steps.

Like transient landmarks, we moved through our days assembling in ever-shifting constellations.

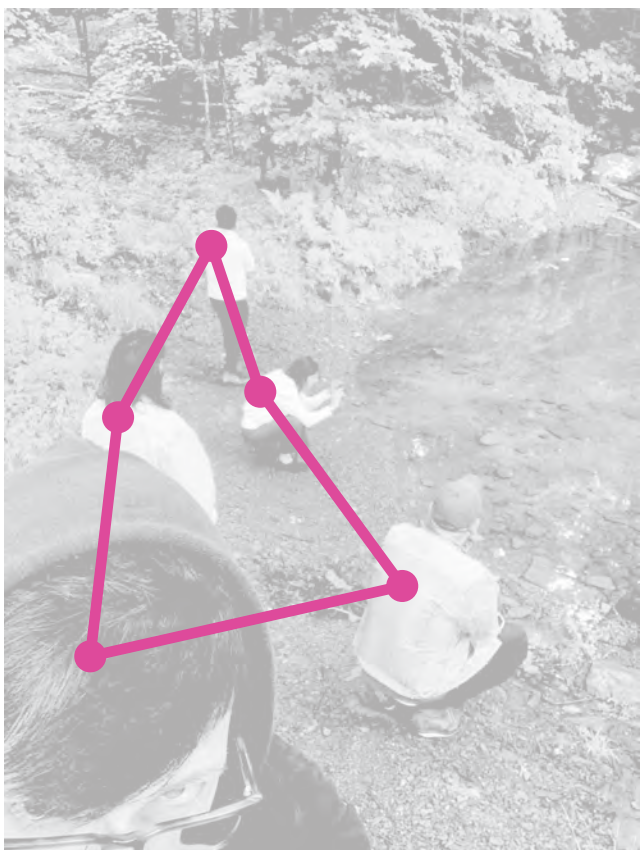
This document aims to capture | hold | some of these relational signposts.





SIGNPOSTED.STILLNESS

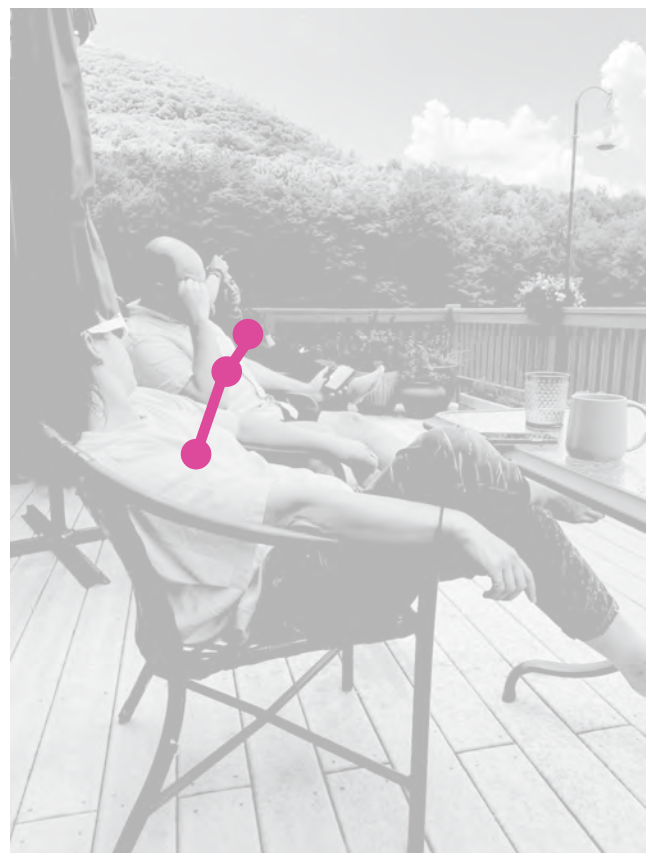
Before our arrival: Ladder, Chair, Place-setting anticipate our assemblies and fusions



SIGNPOSTED.I.

.....
Assembly: Temporary triangle constellation of all 5 at water's edge
Mode: exploratory, observational





SIGNPOSTED.II.

*Assembly: Semi-durable constellation of 3; reclined, elevated on deck
Mode: contemplative, linguistically focused*





SIGNPOSTED.III.

Assembly: Solitary figure standing, briefly obscured, then revealed
Mode: string-y | explanatory rediscovery | invitation to repurpose





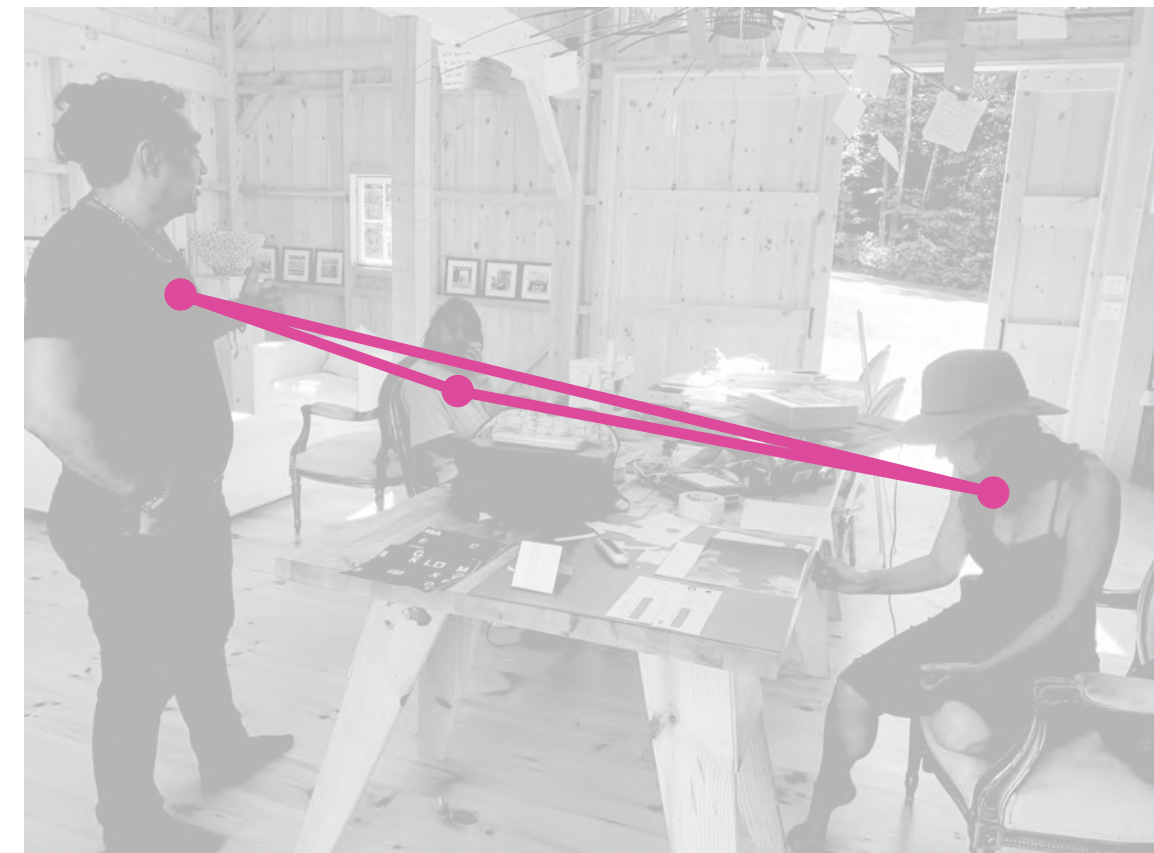
SIGNPOSTED.IV.

*Assembly: Contemplative freeze frame; 4+ photographer
Mode: near shared conceptual breakthrough, alert*



SIGNPOSTED.V.

*Assembly: multilevel triangle: 1 standing and 2 seated
Mode: reminder posture; reminded posture and detail-focused listening posture*

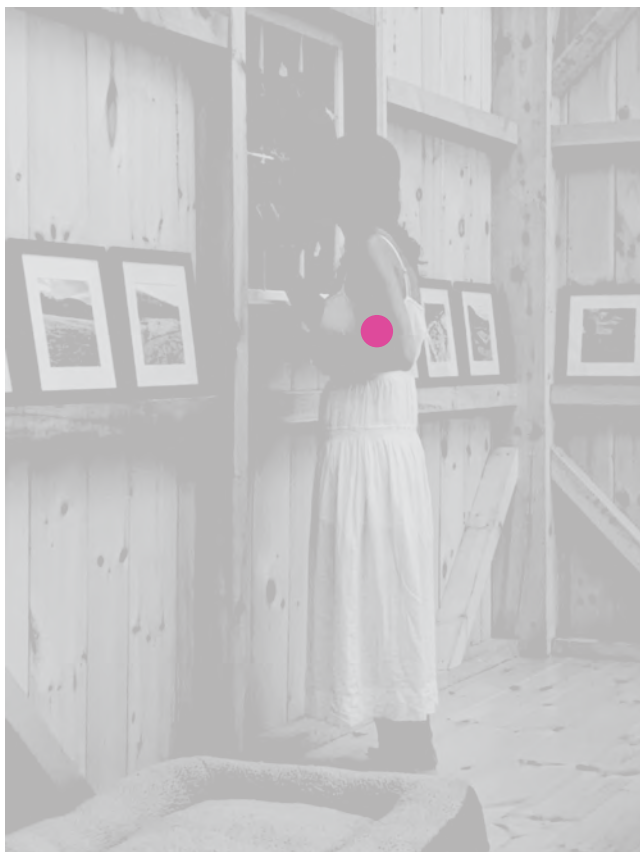




SIGNPOSTED.VI.

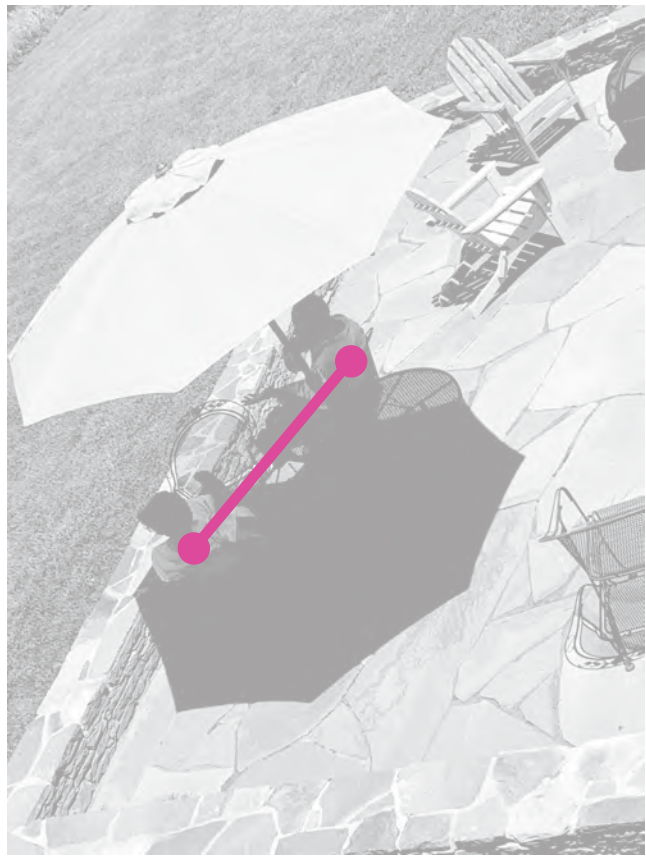
*Assembly: triangular line of 3, in motion, covering a distance
in conversation*

Mode: forward thinking-walking, comparing & sharing ideas



SIGNPOSTED.VII.

Assembly: Solitary standing, semi-permanent, engaged with art-object in progress
Mode: additive experimental, absorbed



SIGNPOSTED.VIII.

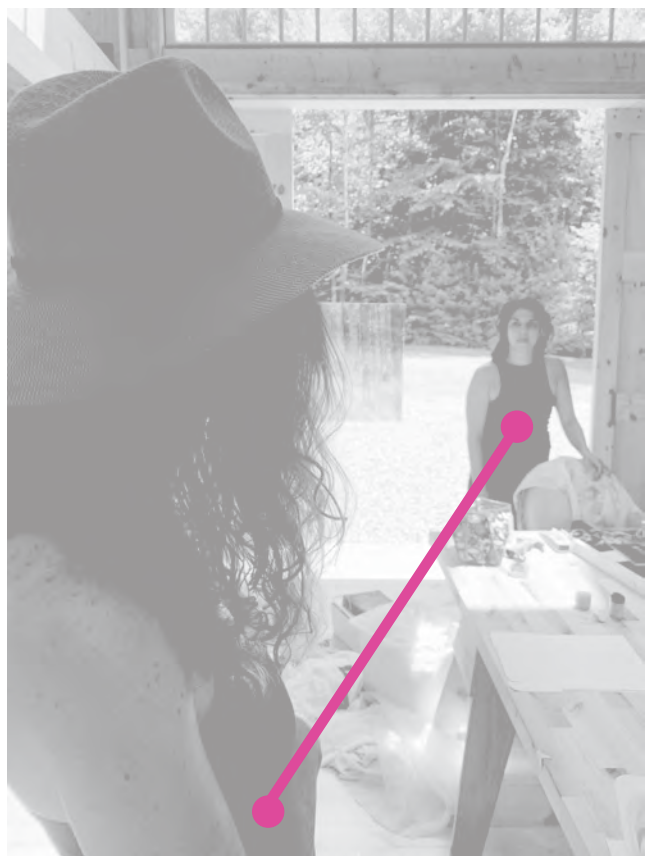
Assembly: Pairing, semi-permanent, reclined on patio in shadow cocoon with notecards
Mode: relaxed conceptual, possibility-focused





SIGNPOSTED.IX.

*Assembly: Pairing, independently engaged, 1 (background, partially obscured) working manually, 1 (foreground) considering virtuality
Mode: conscious of equilibrium in duality*



SIGNPOSTED.X.

*Assembly: Pairing, distanced freeze-frame; considering near transparent visual object at center from opposite (lighting) sides
Mode: curious, anticipatory, connected via current of shared focus*





SIGNPOSTED.XI.

*Assembly: Solitary figure standing at worktable arranging
a small alphabet into language
Mode: attentive & spelling-focused*





SIGNPOSTED.XII.

Assembly: triangle; 2 observers/record-keepers and 1 performer at center

Mode: intense visual and aural focus; communicative communion

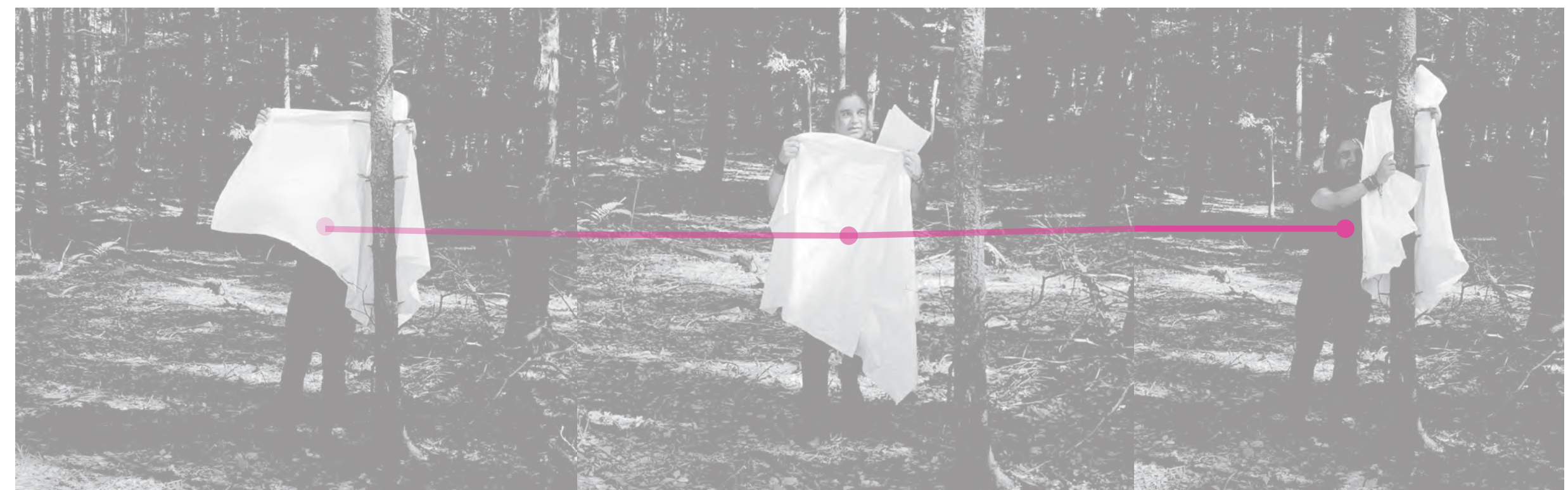




SIGNPOSTED.XIII.

Assembly: Figure in three panels in varying stages of self-obstruction

Mode: immersed in & experimenting with performance;





SIGN-POSED*

** refer to text in image (+ wine).*



SIGNPOSTED.XIV.

Assembly: 4 in square-formation (somewhat) around large, carried sculpture, in-motion (3 visible - 1 only visible as lower leg + foot)

Mode: physically exert-ive, anticipatory, raucous

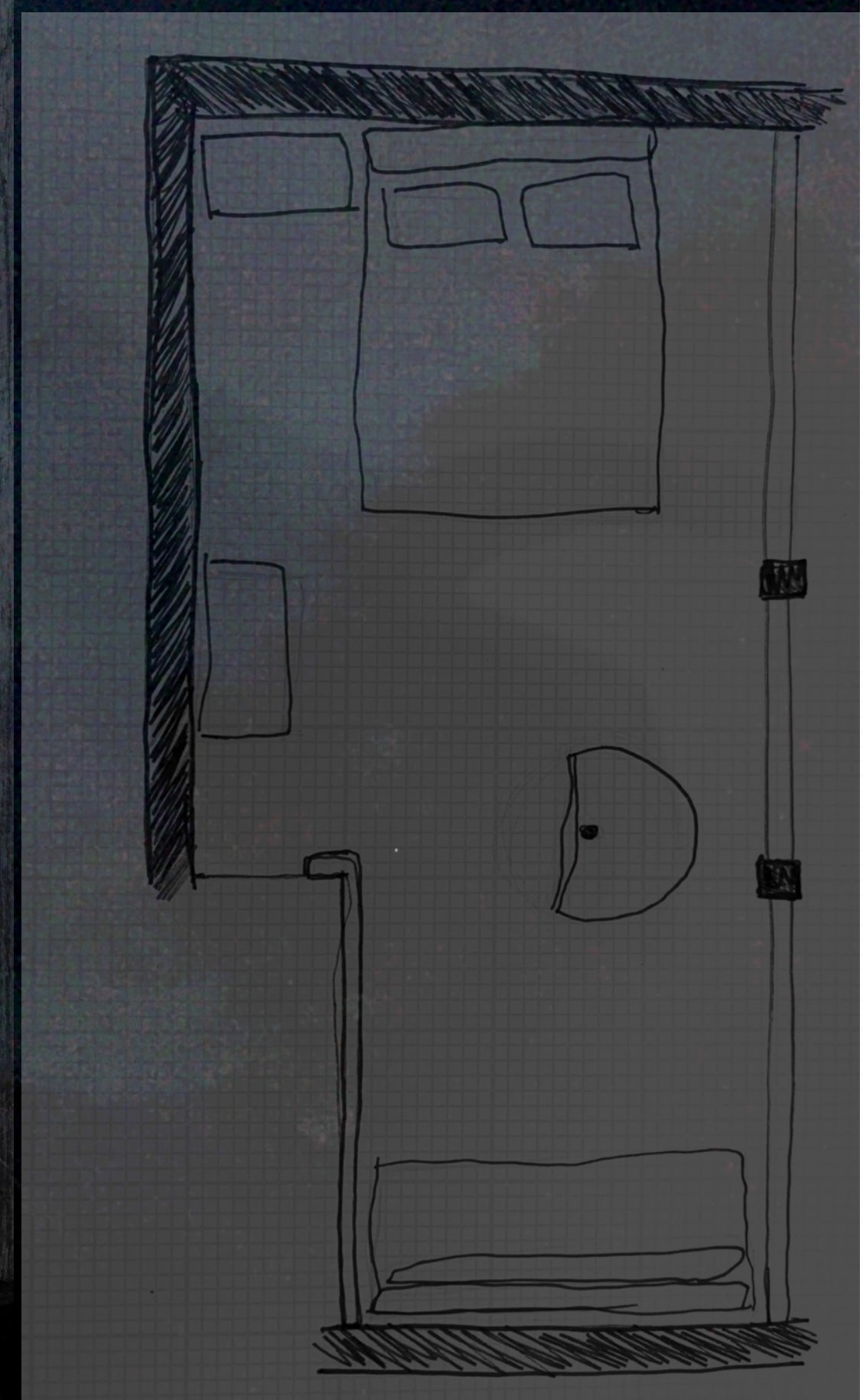
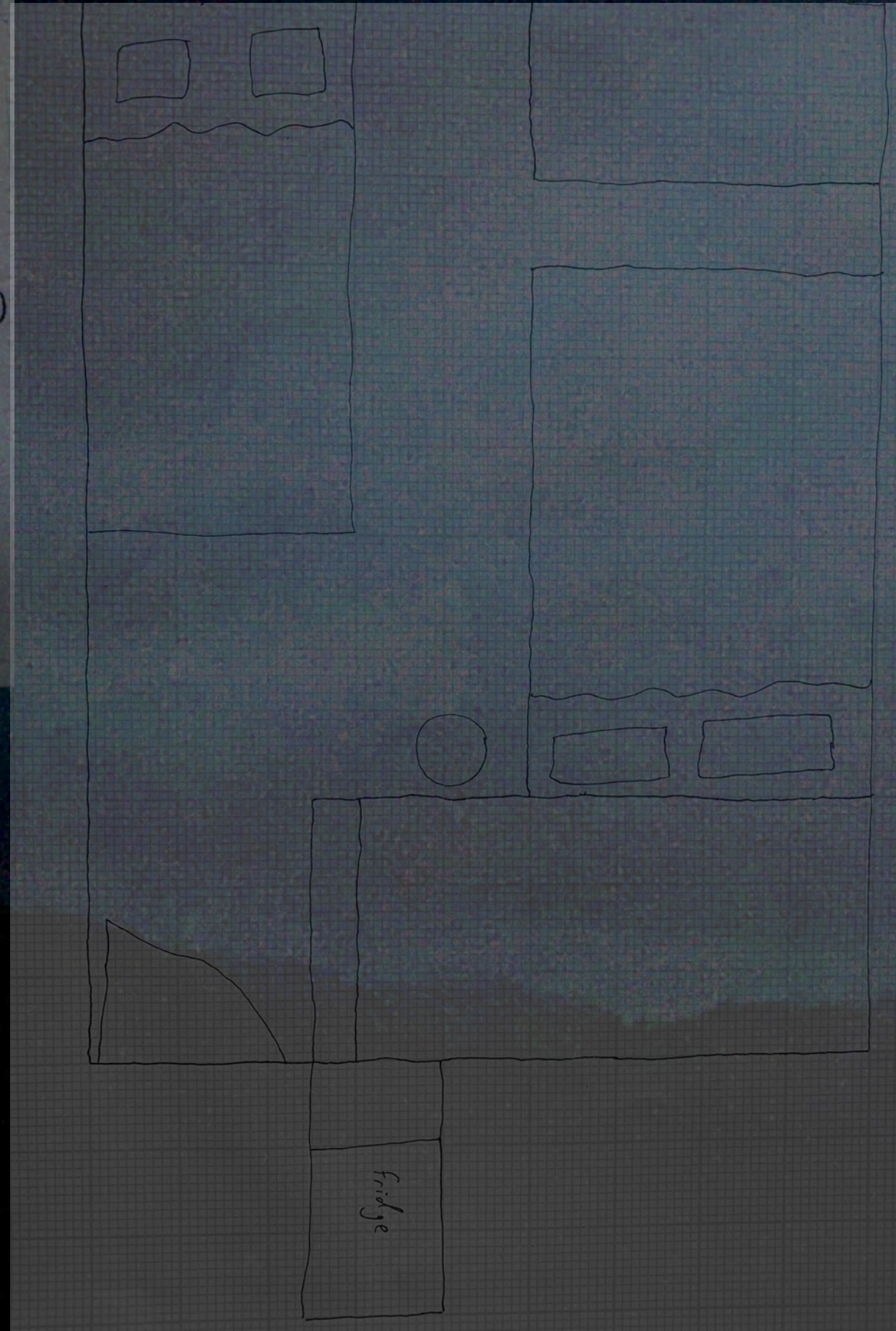
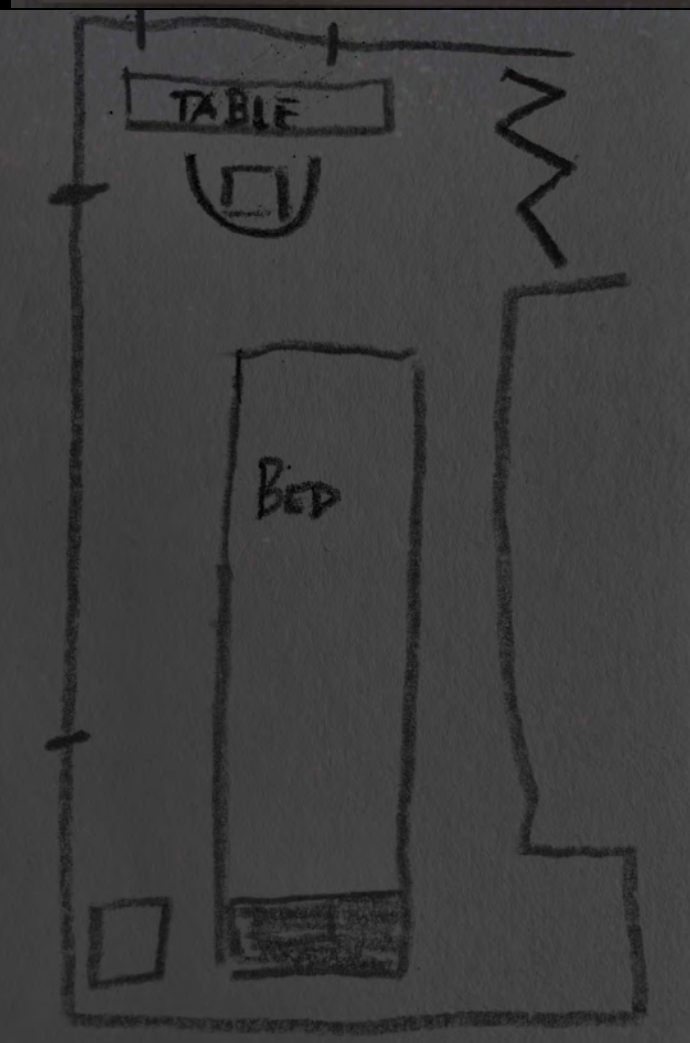
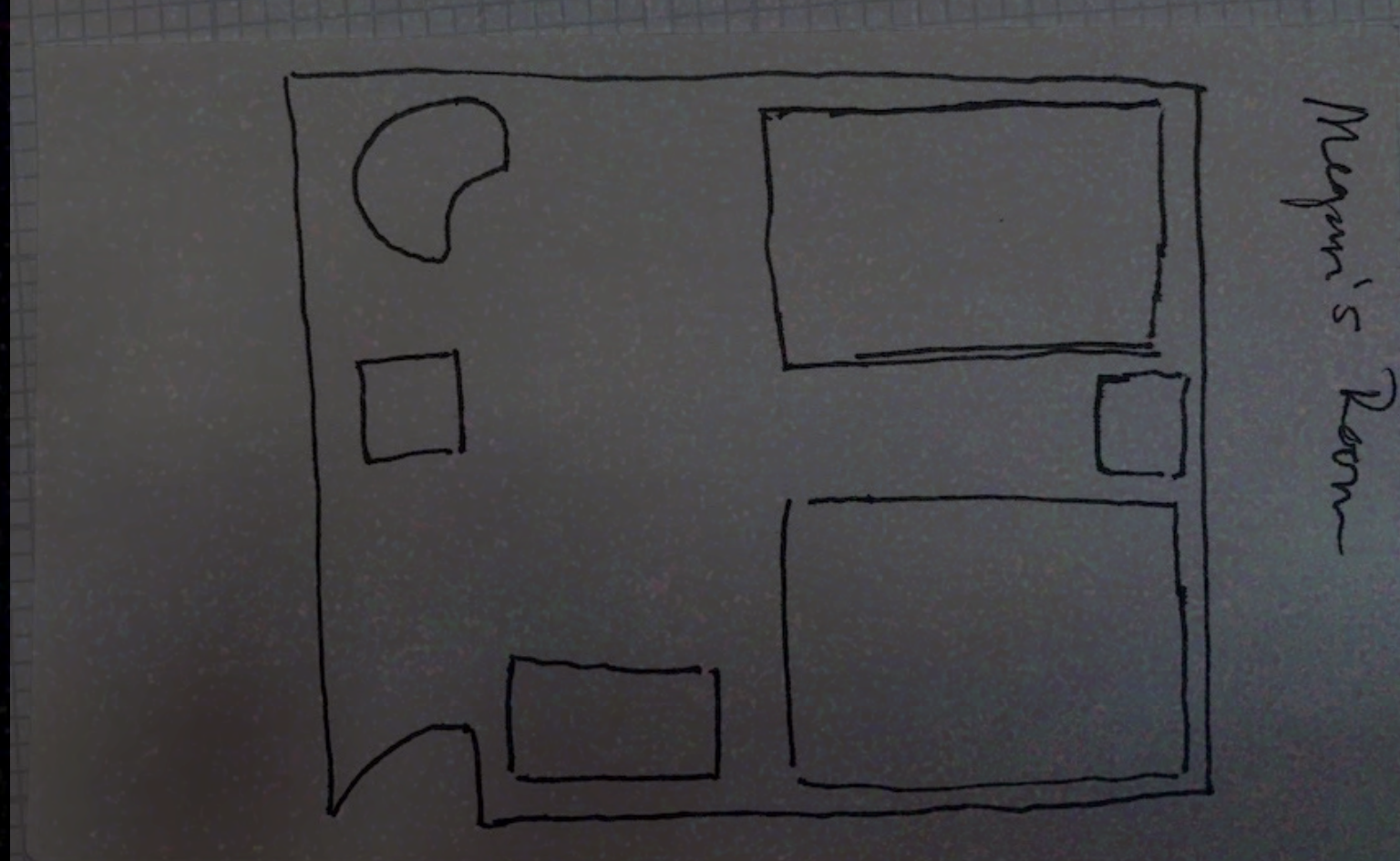




SIGNPOSTED.XV.

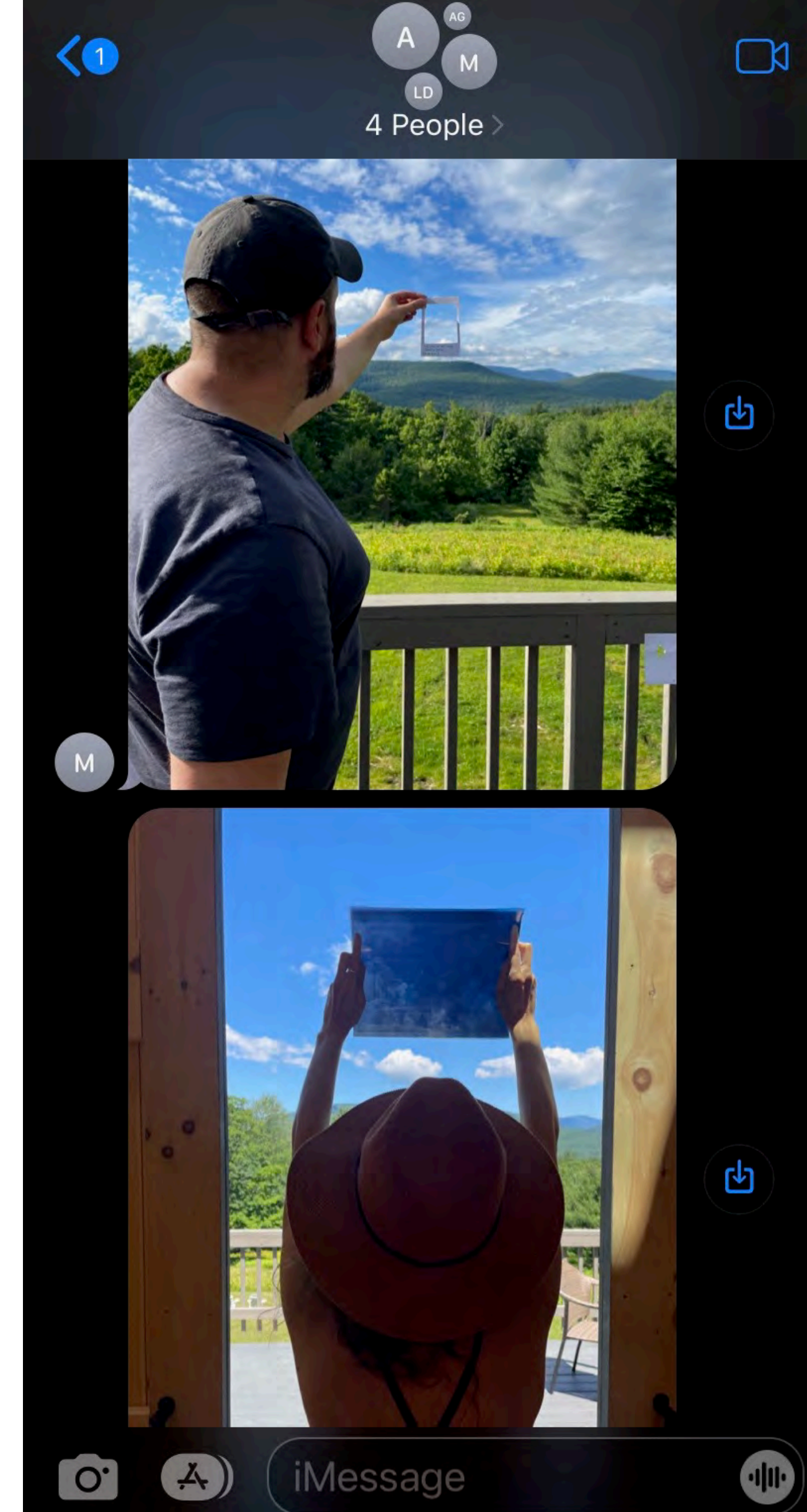
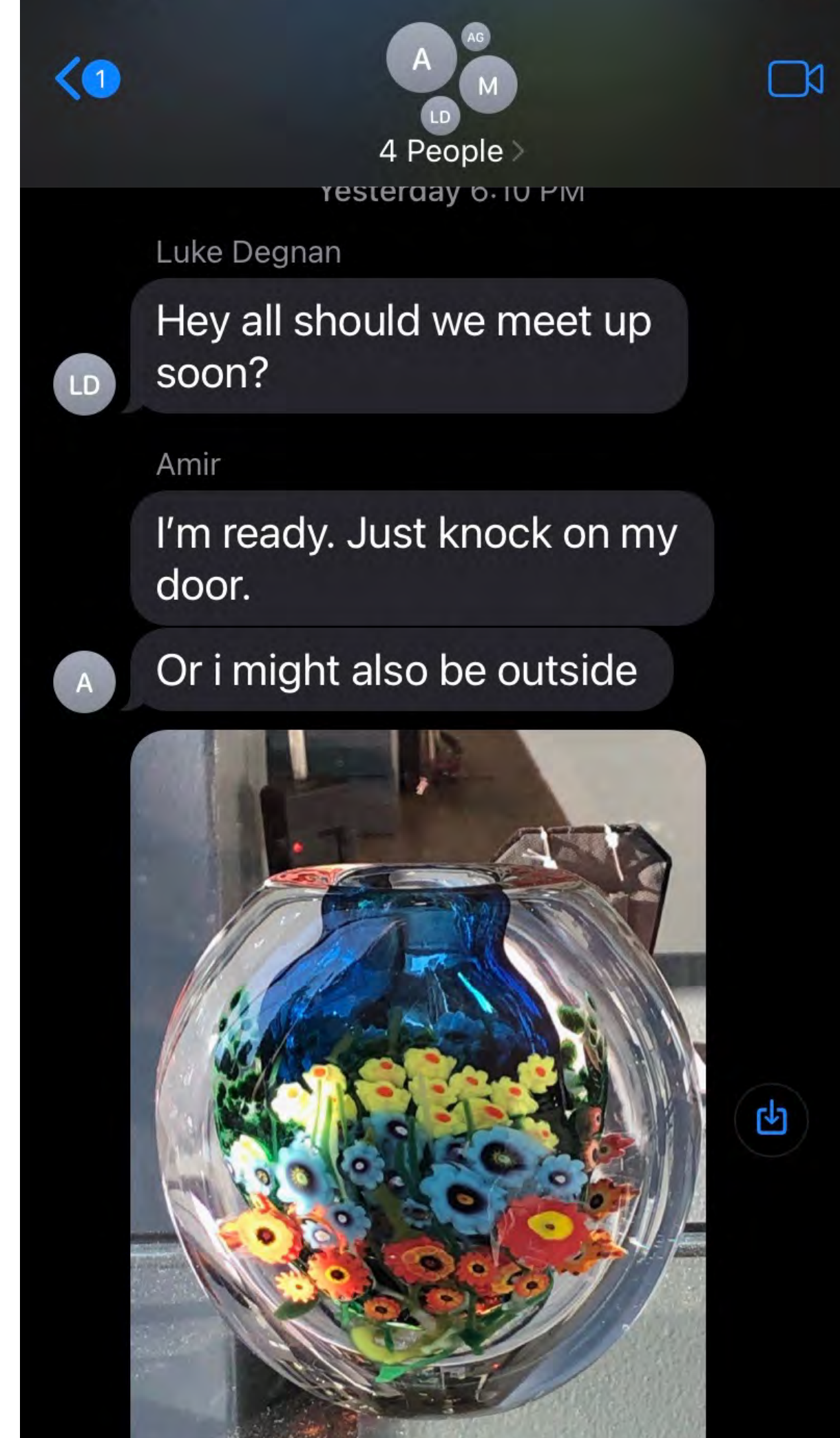
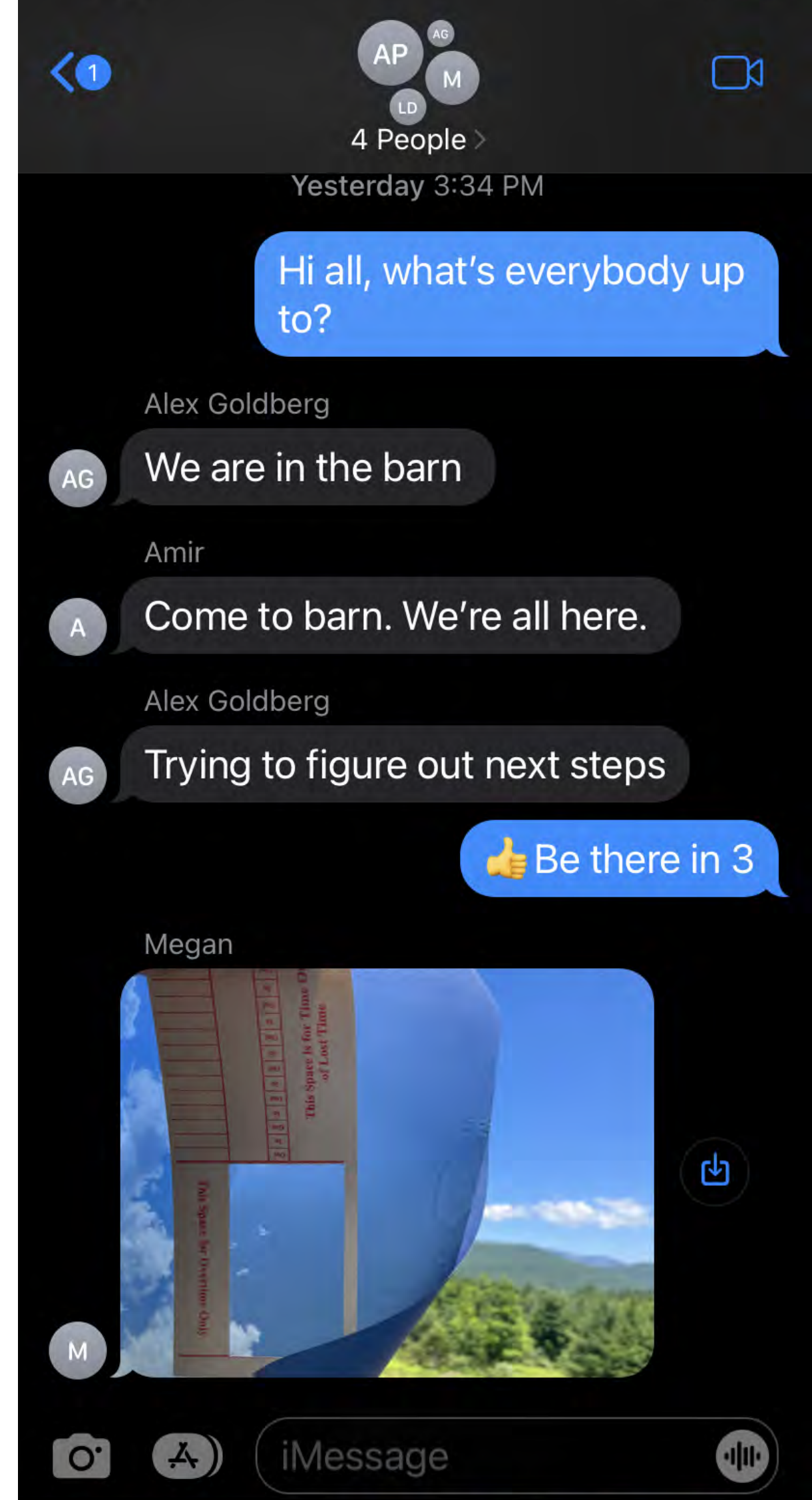
Assembly: Pairing, standing side by side, engaged with sculpture; flame bearing
Mode: intensely focused, sisterly, fire-tranced





SIGNPOSTED.PM.

Assembly: individual series of 5 rooms as rendered by occupants, nighttime cocoons; durable extended, movement minimal; Mode: physically and creatively digestive; surrendered; grateful



SIGNPOSTED.VRTL.

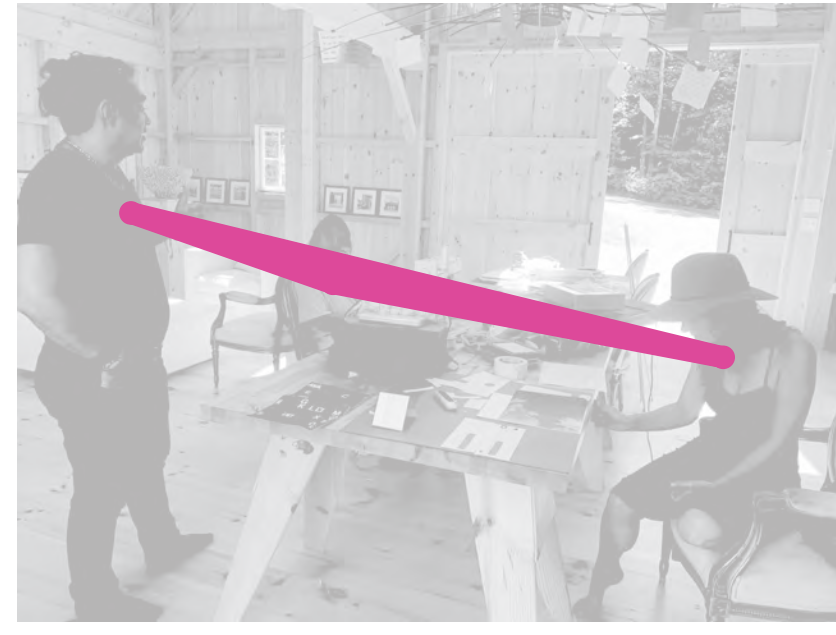
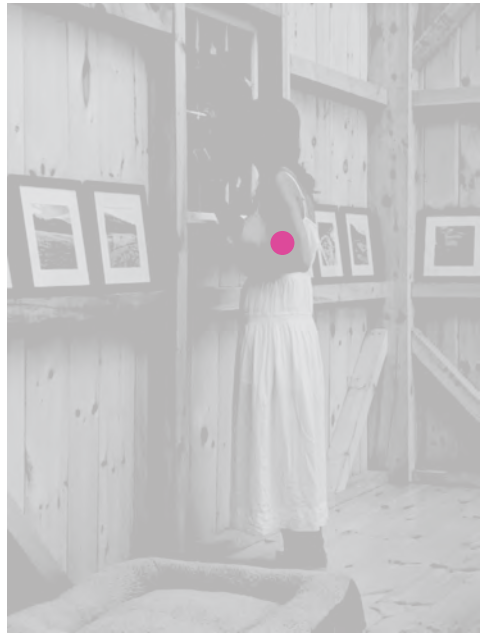
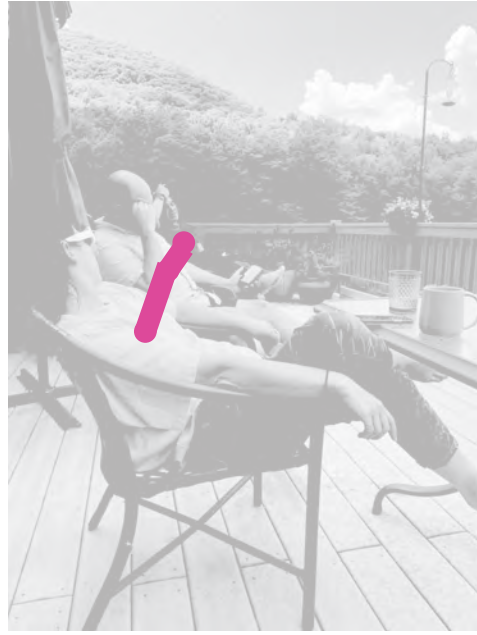
Assembly: text-ing excerpts showing our searching for each other IRL and sharing visual discoveries

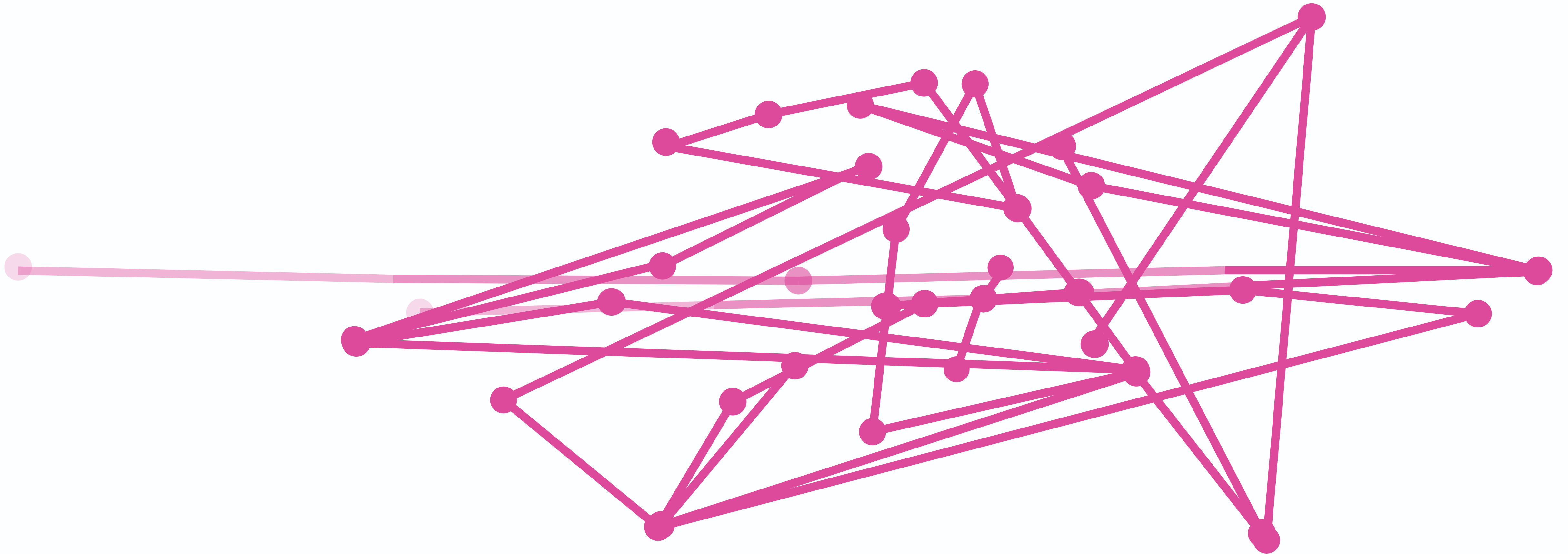
Mode: anticipatory, logistical, affectionate



SIGN-POSED

*Assembly: Ensemble seated around a table, semi-permanent, in Mud-Club's
ambiance; waiting for sustenance (Pizza)
Mode: Hungry | giddy | off topic on topic*







By MGB and graphics by AG